

Hospital Utilization by the Uninsured and Other Vulnerable Populations in New Jersey

Presented to

The New Jersey Department of Health and Senior Services

on June 16, 2004

by

Derek DeLia, Ph.D.

Assistant Professor/Senior Policy Analyst



Rutgers Center for
State Health Policy

Acknowledgements

Rutgers Center for State Health Policy

Elizabeth Wood

Carl Schneider

Joel Cantor

New Jersey Department of Health & Senior Services

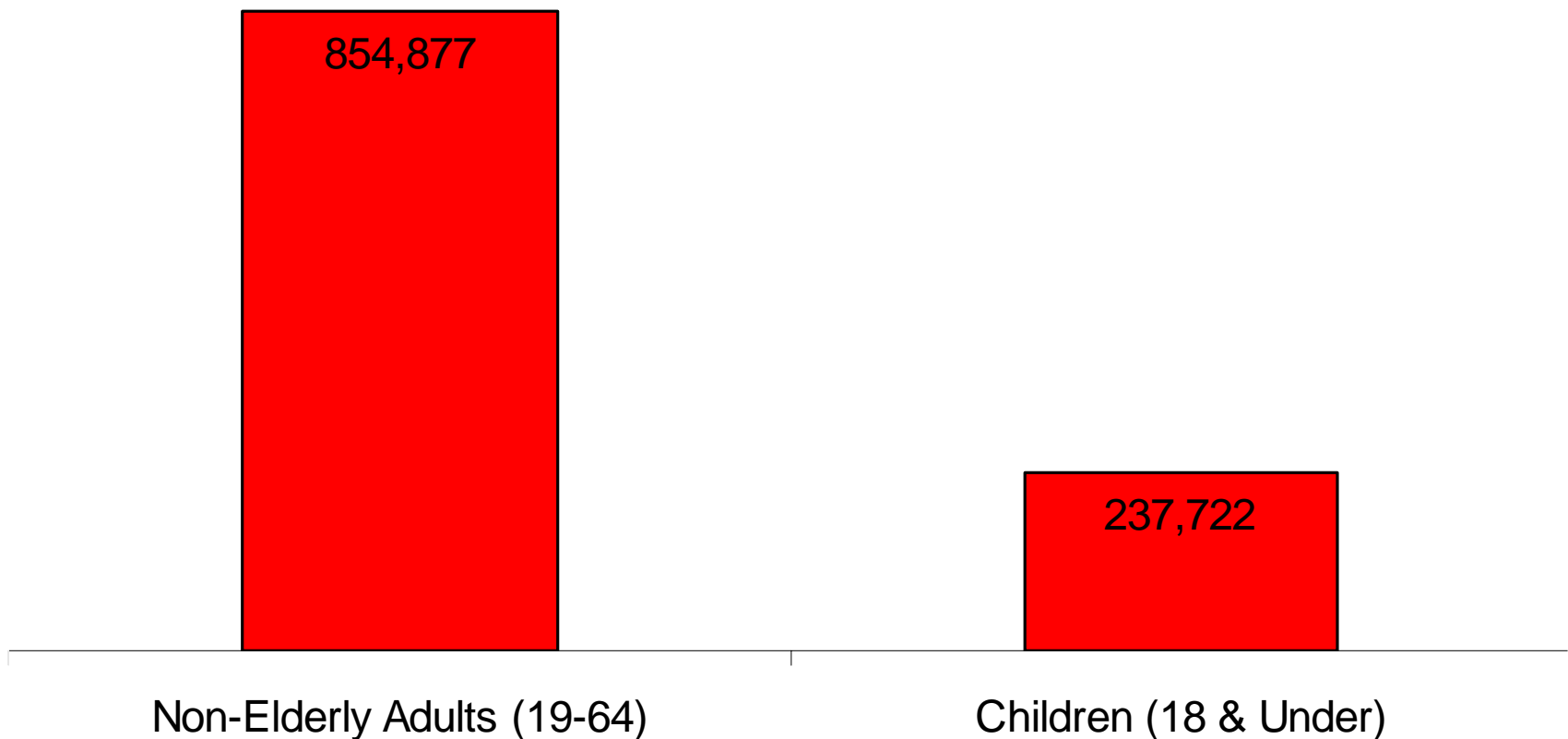
Vincent Yarmlak

Reginald Selden

Outline

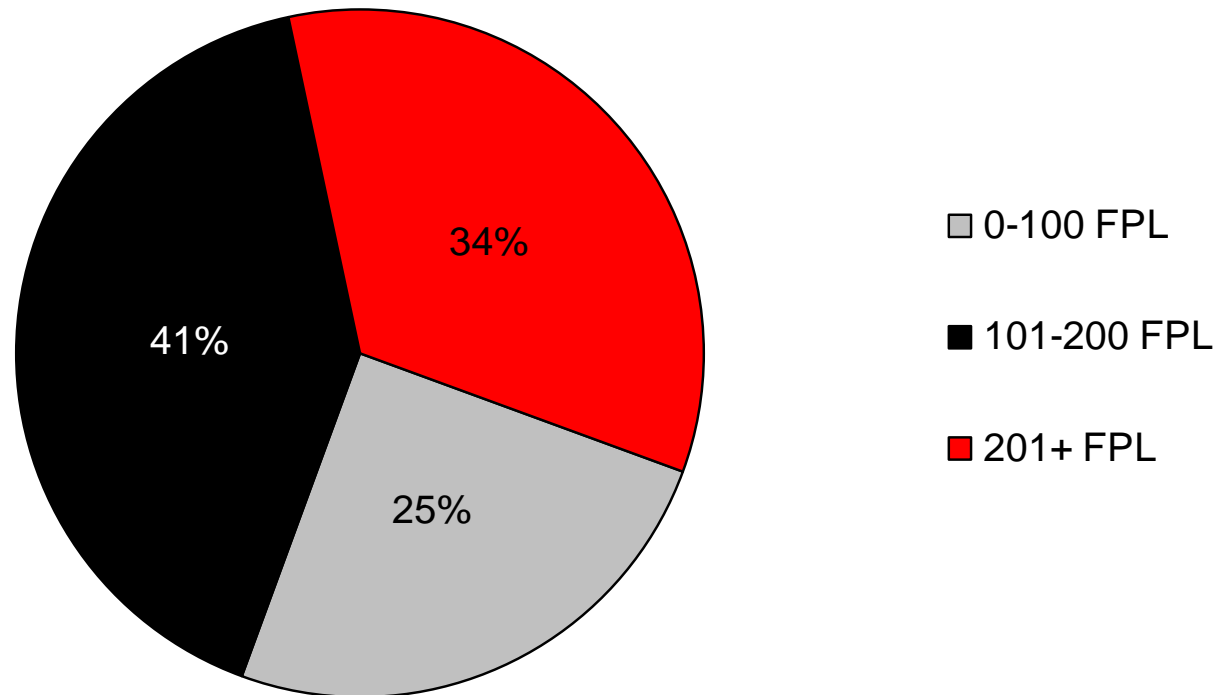
1. Uninsured in NJ
2. Use of hospital-based charity care
3. Preventable hospitalizations
4. Summary/conclusion

Uninsured non-elderly adults and children in NJ



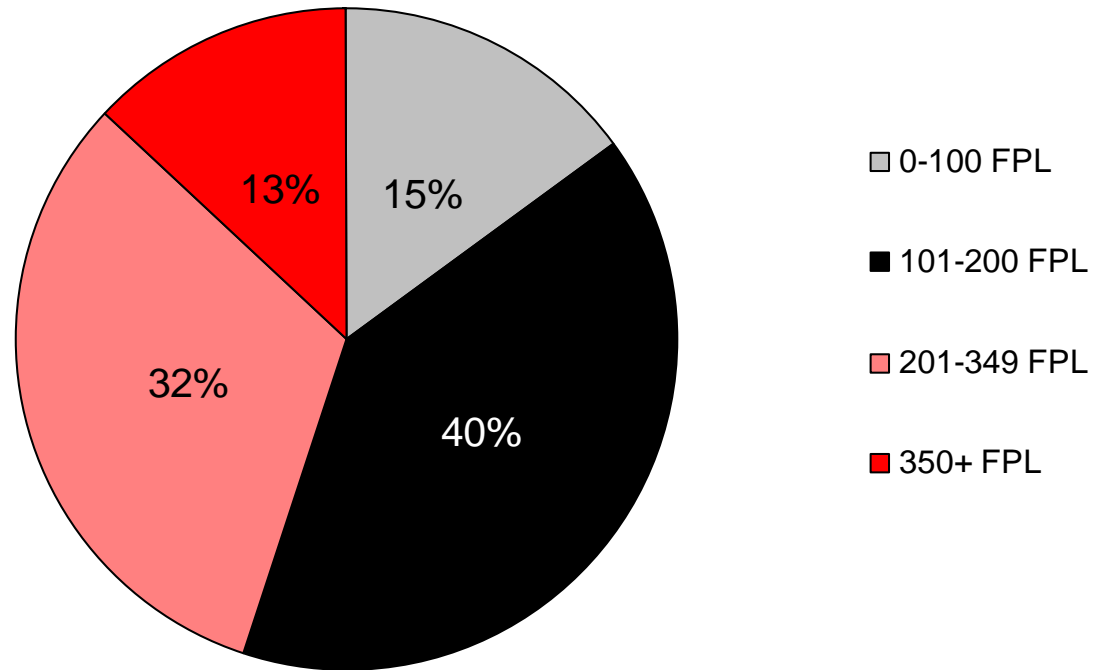
Source: NJ Family Health Survey, 2001

Uninsured children in NJ by household income as a percentage of the Federal Poverty Level (FPL), 2001



Source: NJ Family Health Survey, 2001

Uninsured non-elderly adults in NJ by household income as a percentage of the Federal Poverty Level (FPL), 2001



Source: NJ Family Health Survey, 2001

Hospital-Based Charity Care

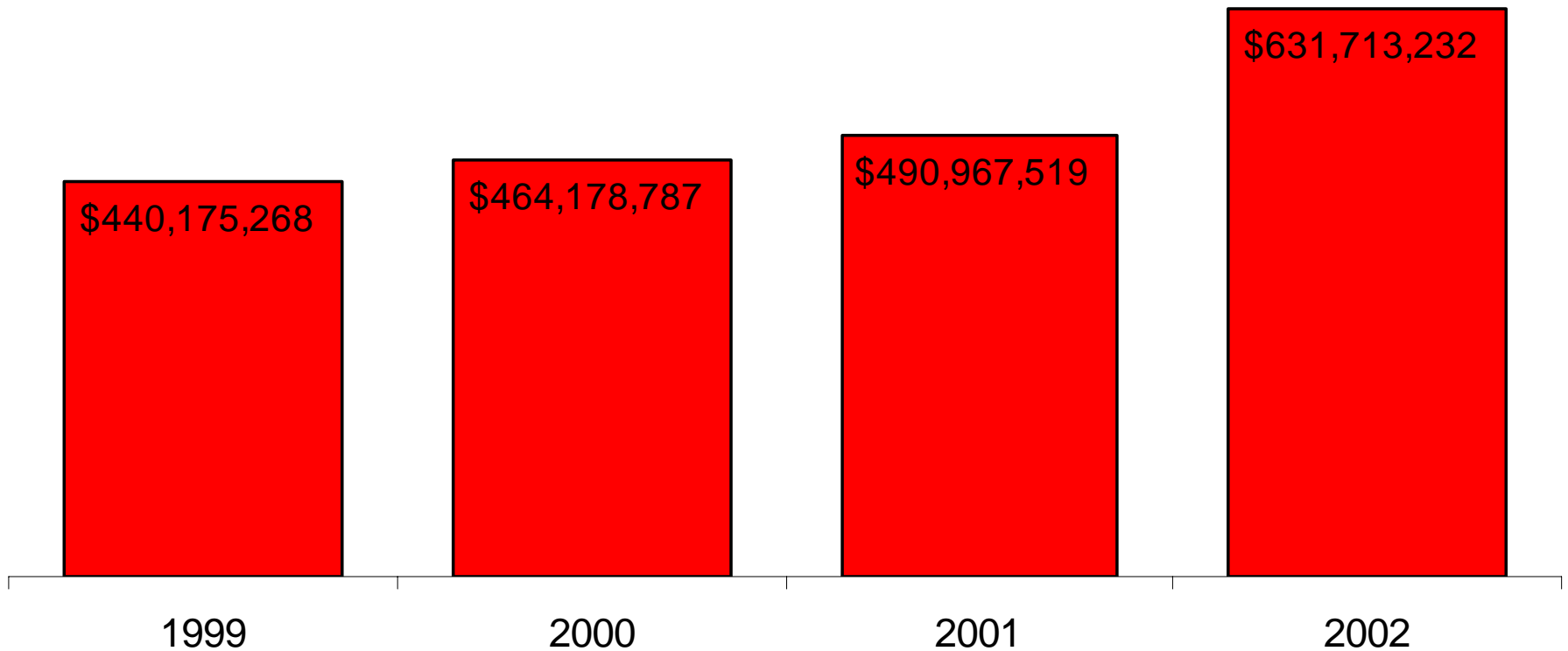
- NJ Hospital Care Payment Assistance Program
 - Income-based subsidies
 - 100% if income < 200 FPL
 - Sliding scale from 200-300 FPL
- Emphasis on services delivered to patients

Charity Care Claims Data

- Payment date
- Calendar year

- Priced at Medicaid rates
- Does not reflect payment received
- Inflation adjusted
 - CPI
 - Base year 2000

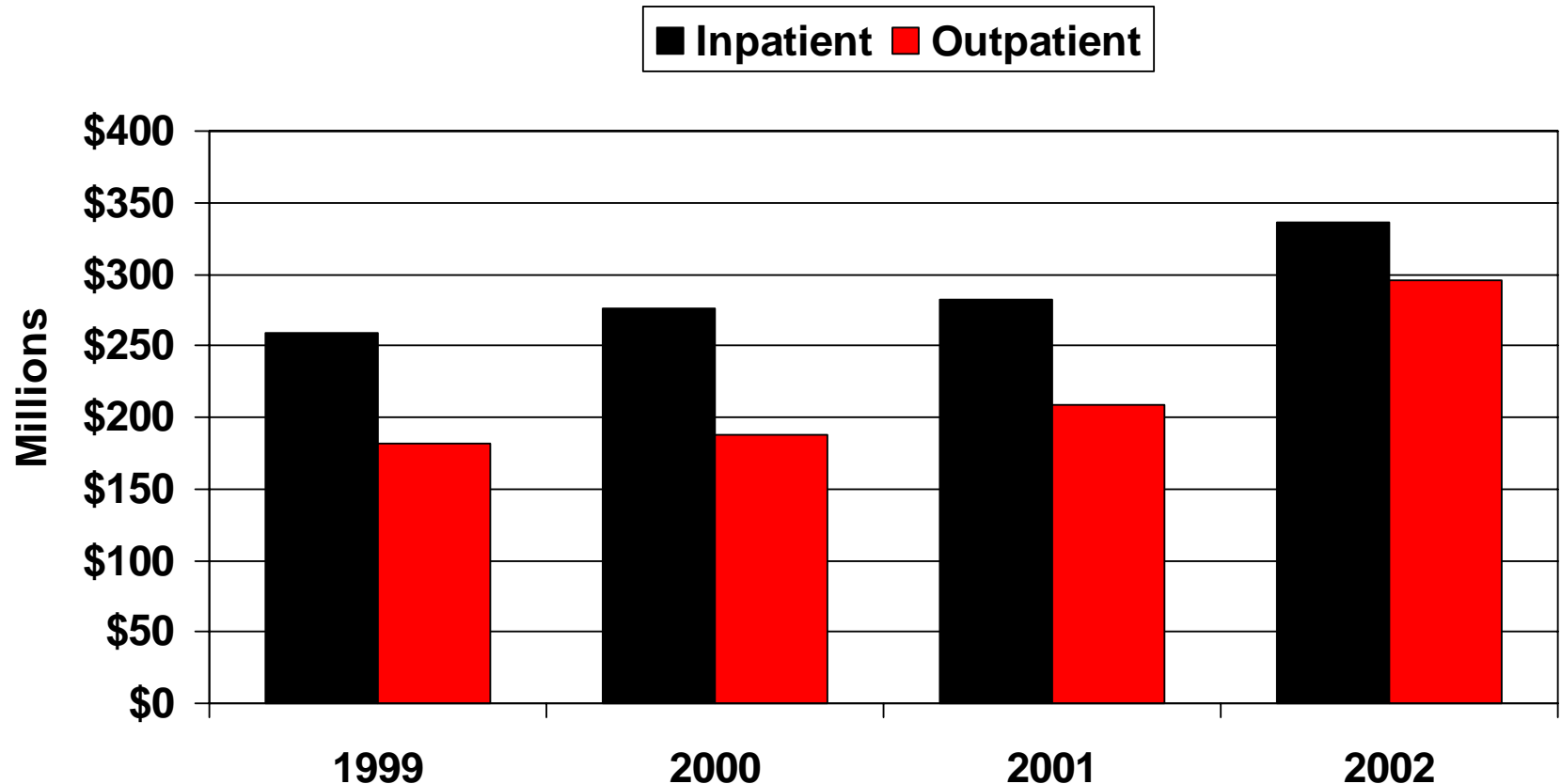
Total value of charity care claims in NJ*



Source: NJ Charity Care Claims Data

* Priced at Medicaid rates. Inflation adjusted using 2000 CPI.

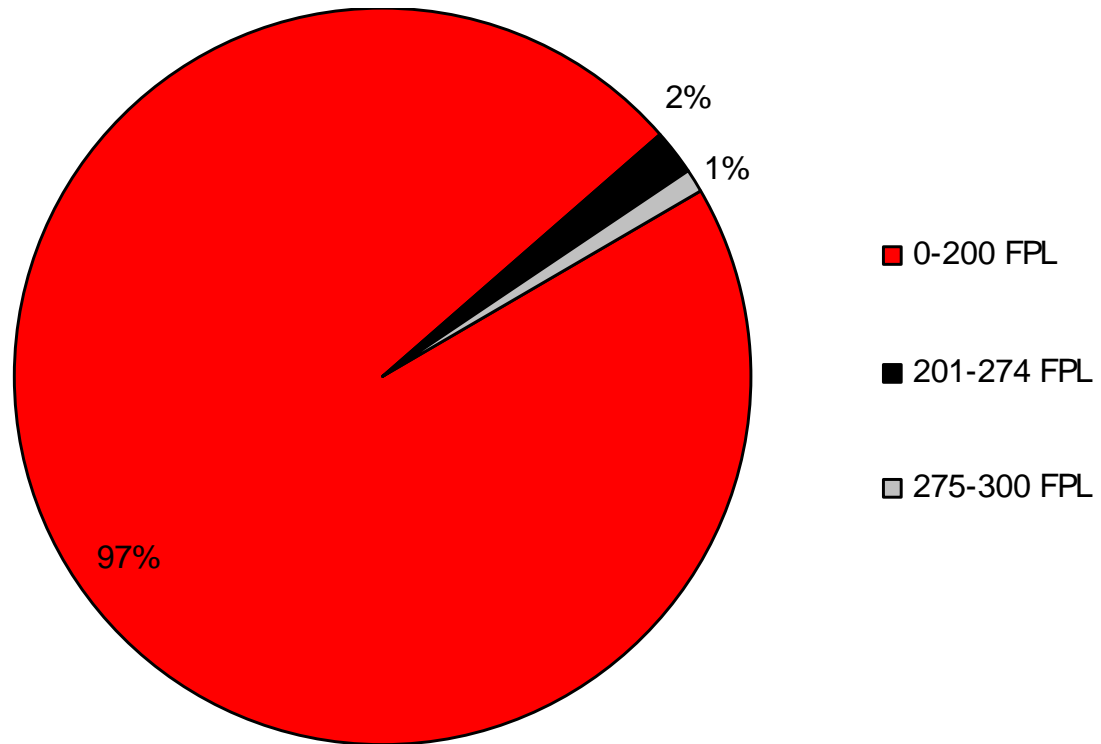
Total Value of Charity Care Claims: Inpatient vs. Outpatient*



Source: NJ Charity Care Claims Data

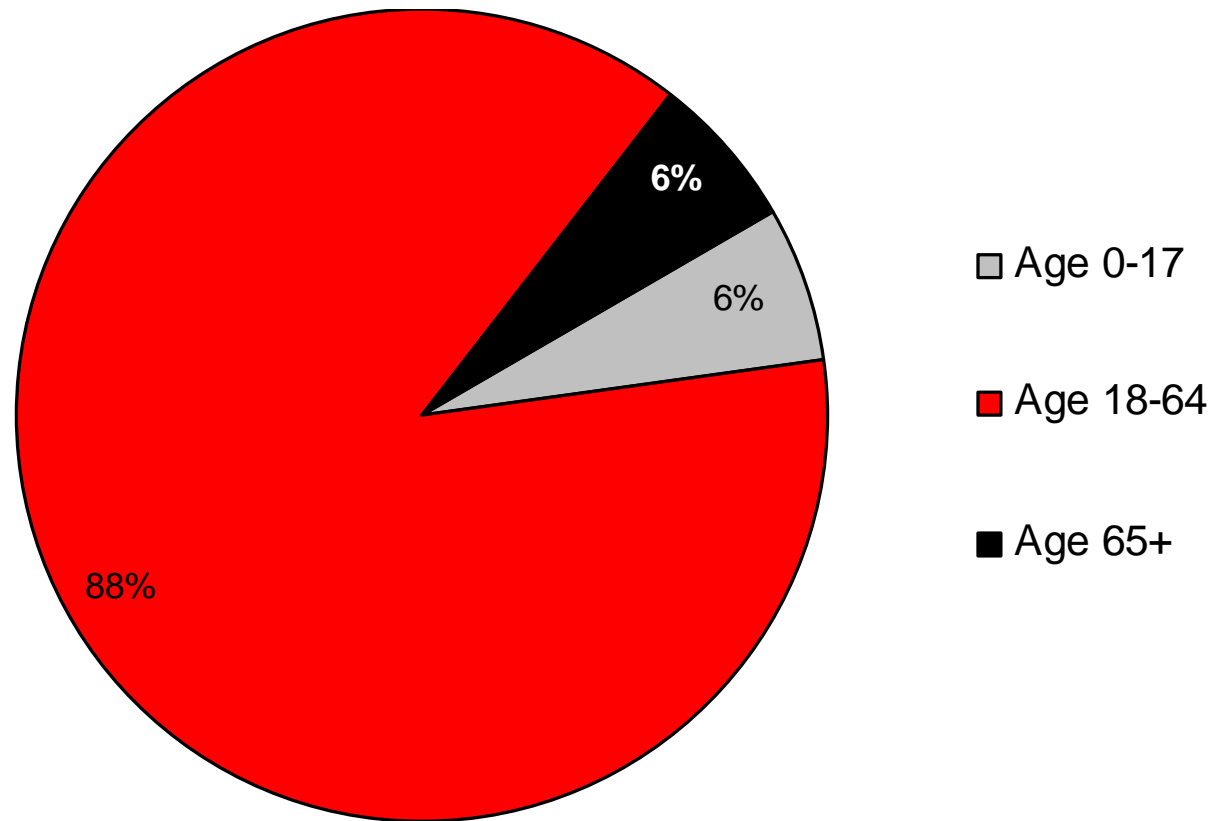
* Priced at Medicaid rates. Inflation adjusted using 2000 CPI.

Total charity care encounters by income as a percentage of the Federal Poverty Level in NJ, 2002



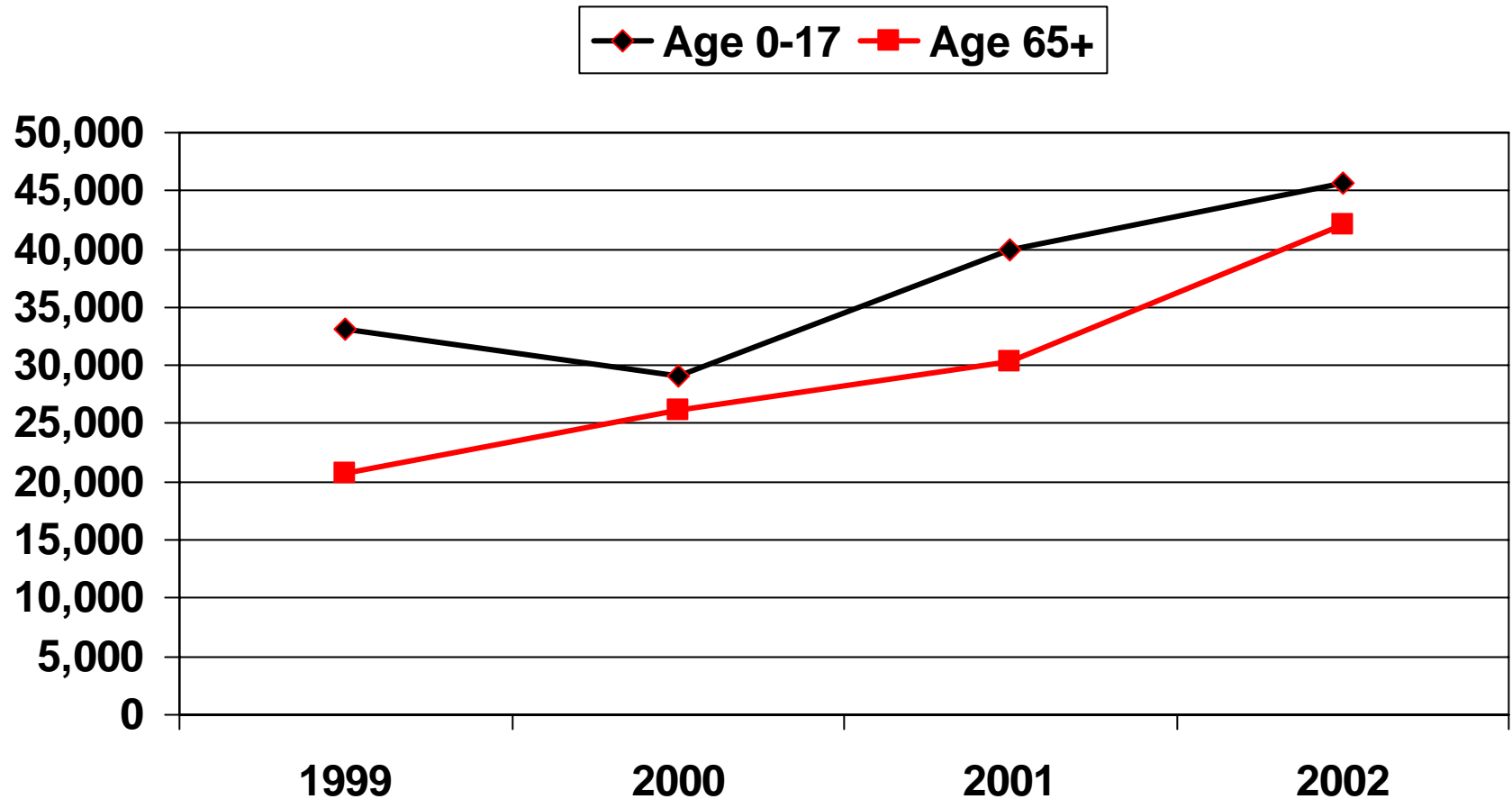
Source: NJ Charity Care Claims Data

Total charity care encounters in NJ by age of recipient, 2002



Source: NJ Charity Care Claims Data

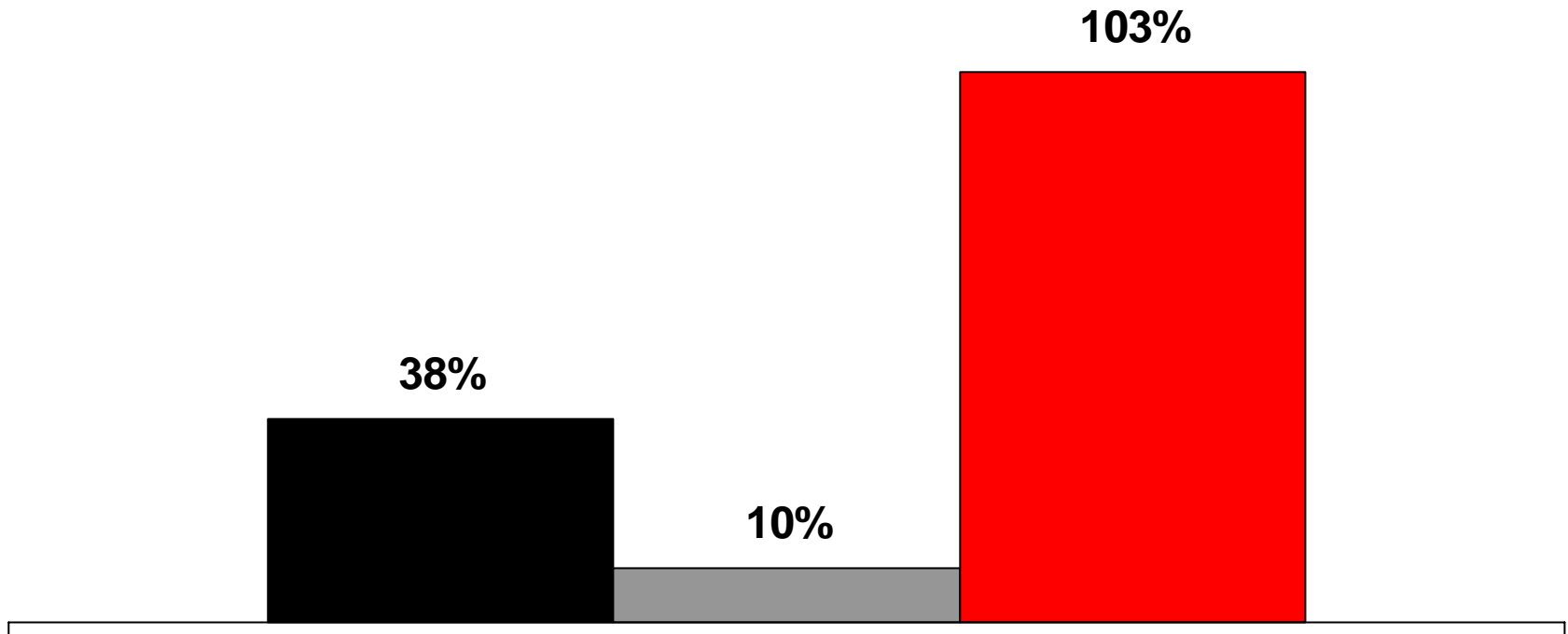
Charity Care Encounters for Children and Elderly Patients, 1999-2002



Source: NJ Charity Care Claims Data

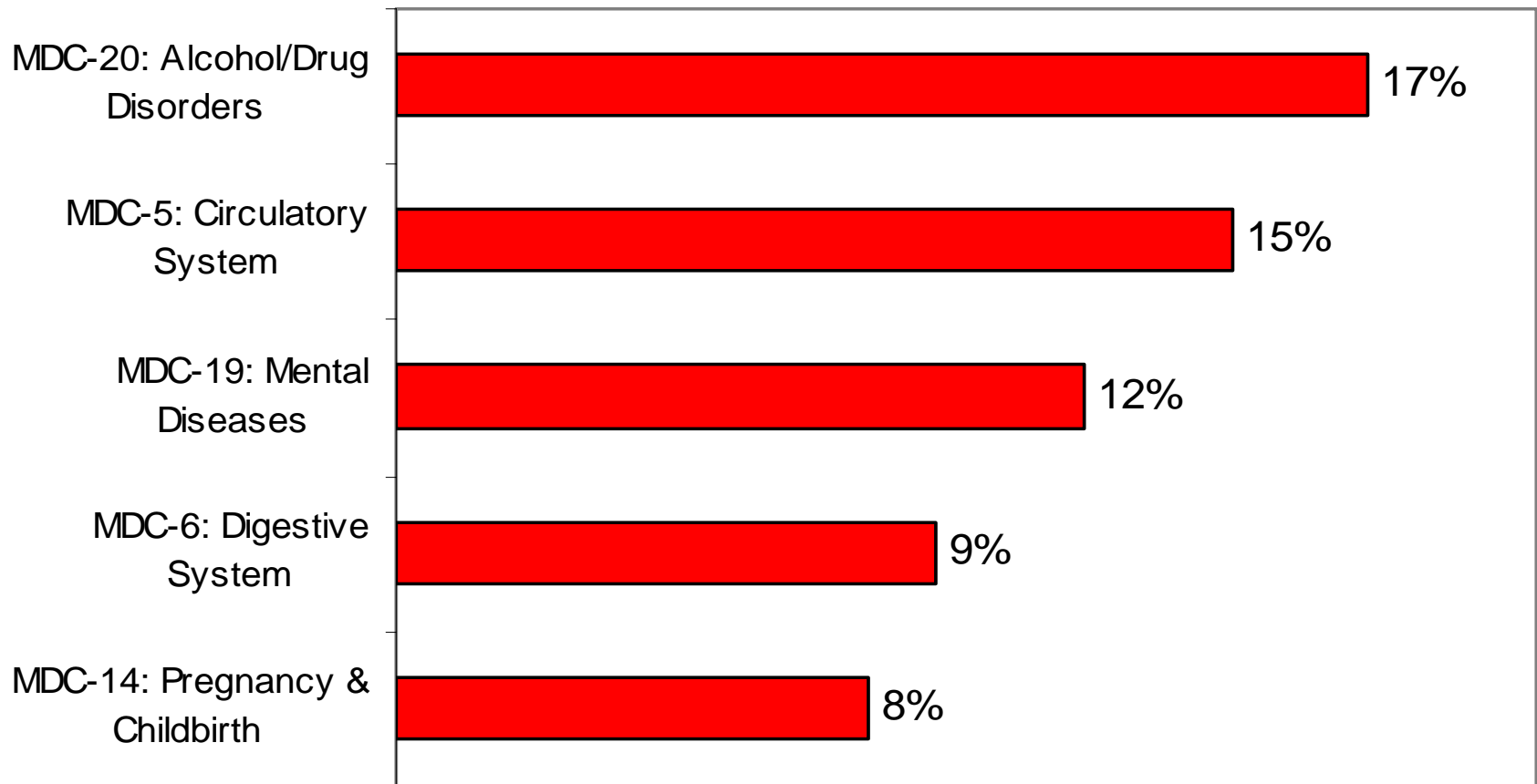
Cumulative Percentage Change in Charity Care Encounters by Age, 1999-2002

■ Children (0-17) ■ Adults (18-64) ■ Elderly (65+)



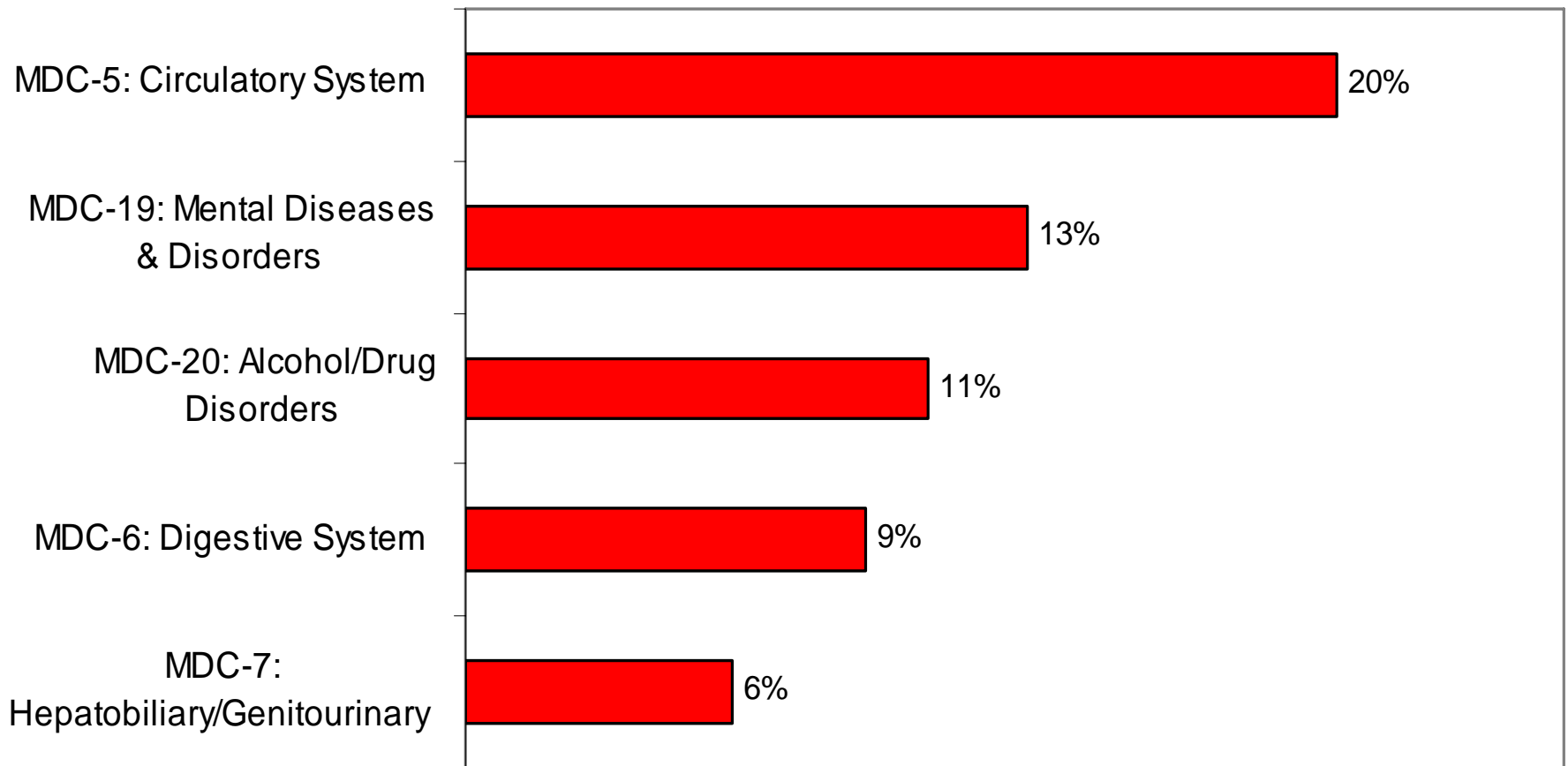
Source: NJ Charity Care Claims Data

Percentage of inpatient charity care admissions in NJ by the Top 5 Major Diagnostic Categories (MDC's), 2002



Source: NJ Charity Care Claims Data

Percentage of inpatient charity care dollars in NJ by the Top 5 Major Diagnostic Categories (MDC's), 2002



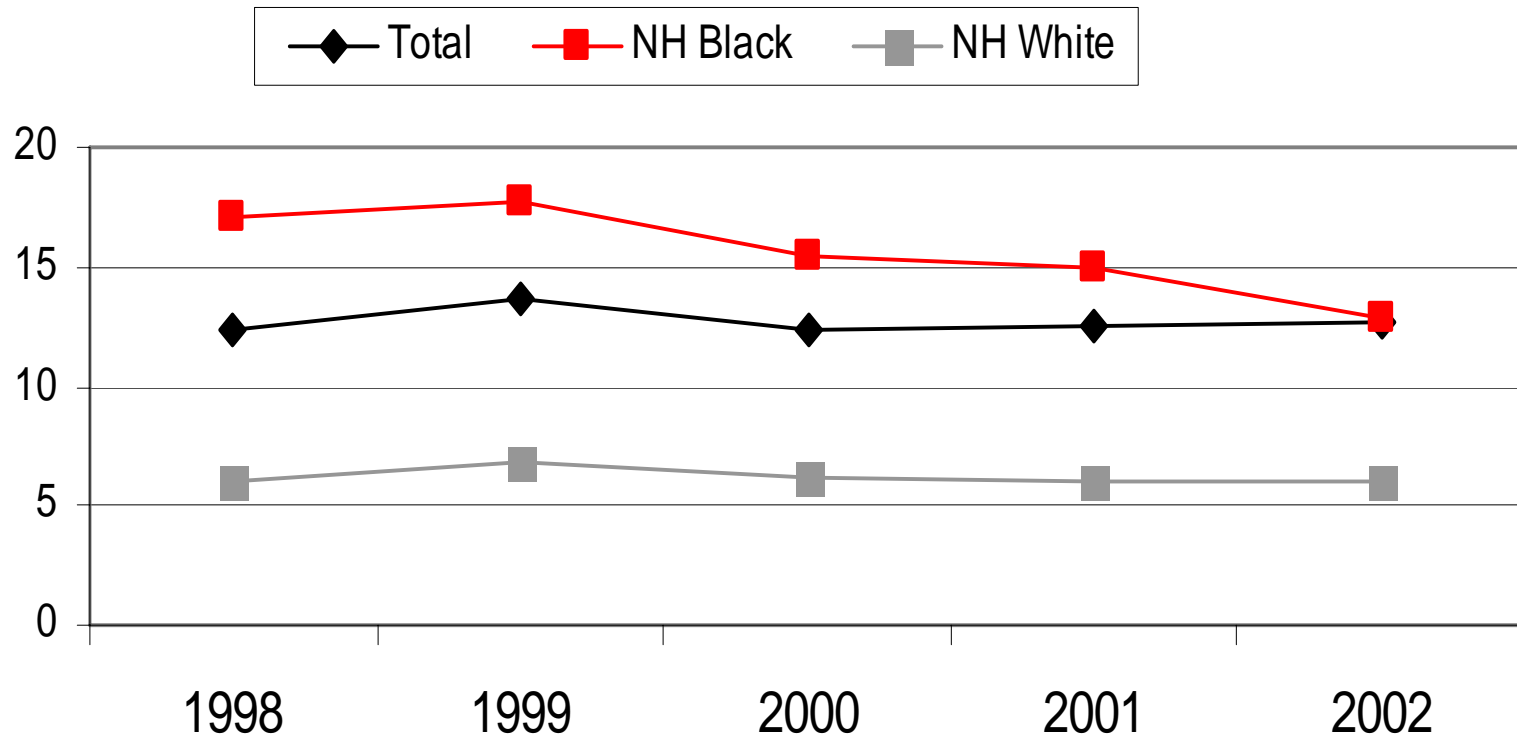
Source: NJ Charity Care Claims Data

Preventable Hospitalizations

- Ambulatory care sensitive (ACS) admissions
- Age/sex adjusted rates per 1,000 individuals
- UB-92 & U.S. Census data

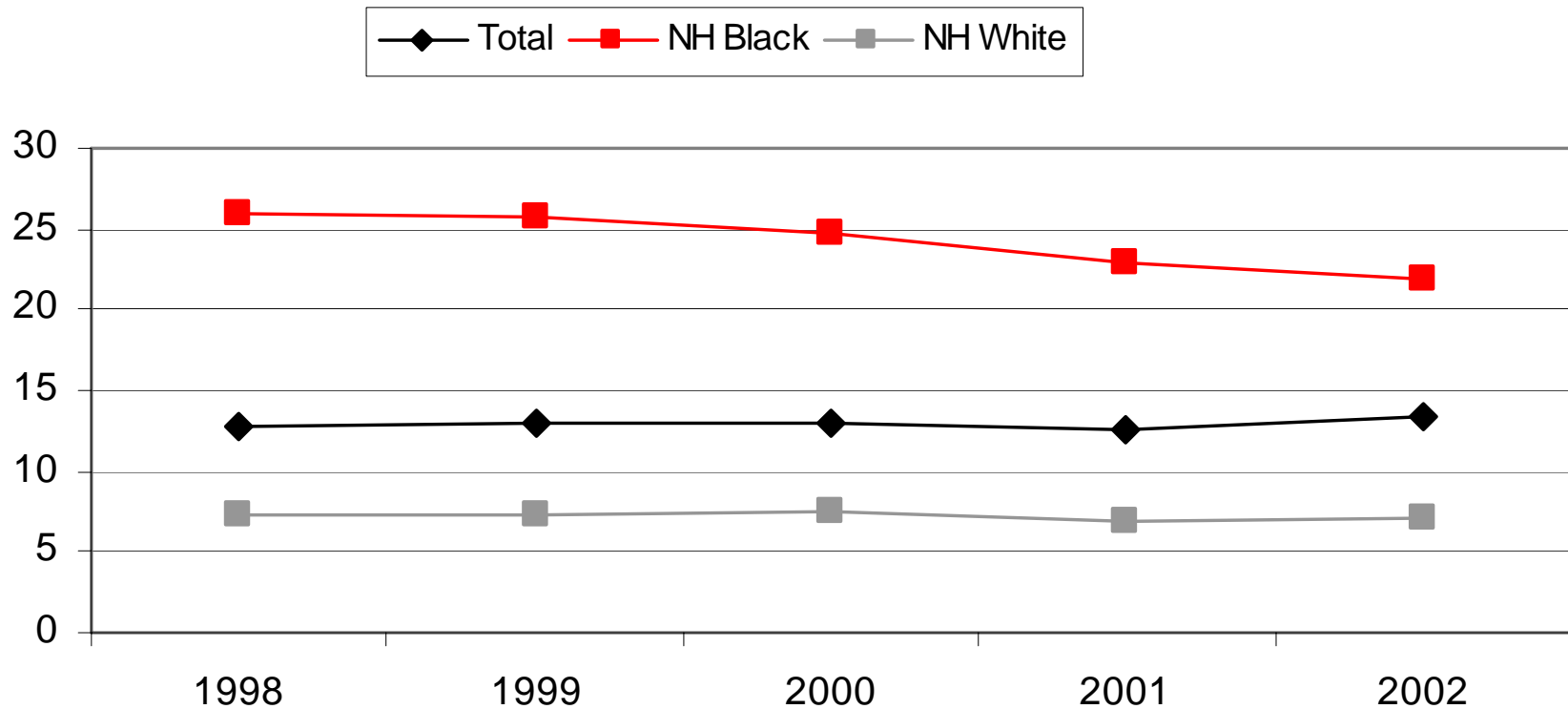
- Overall, Non-Hispanic (NH) Black, NH White
- Hispanic patients difficult to identify in UB
- Children & non-elderly adults

Preventable hospitalization rates per 1,000 children



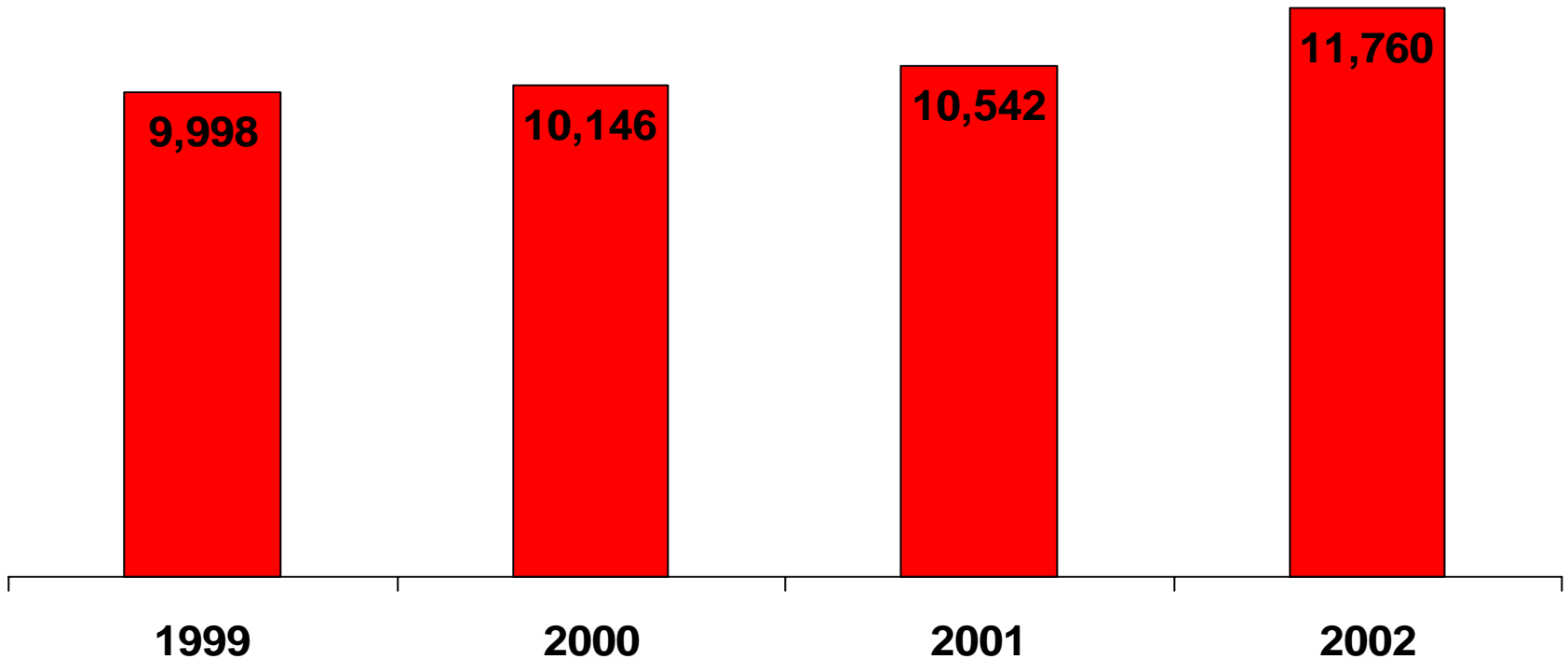
Source: NJ Hospital Uniform Billing (UB-92) Data

Preventable hospitalization rates per 1,000 non-elderly adults



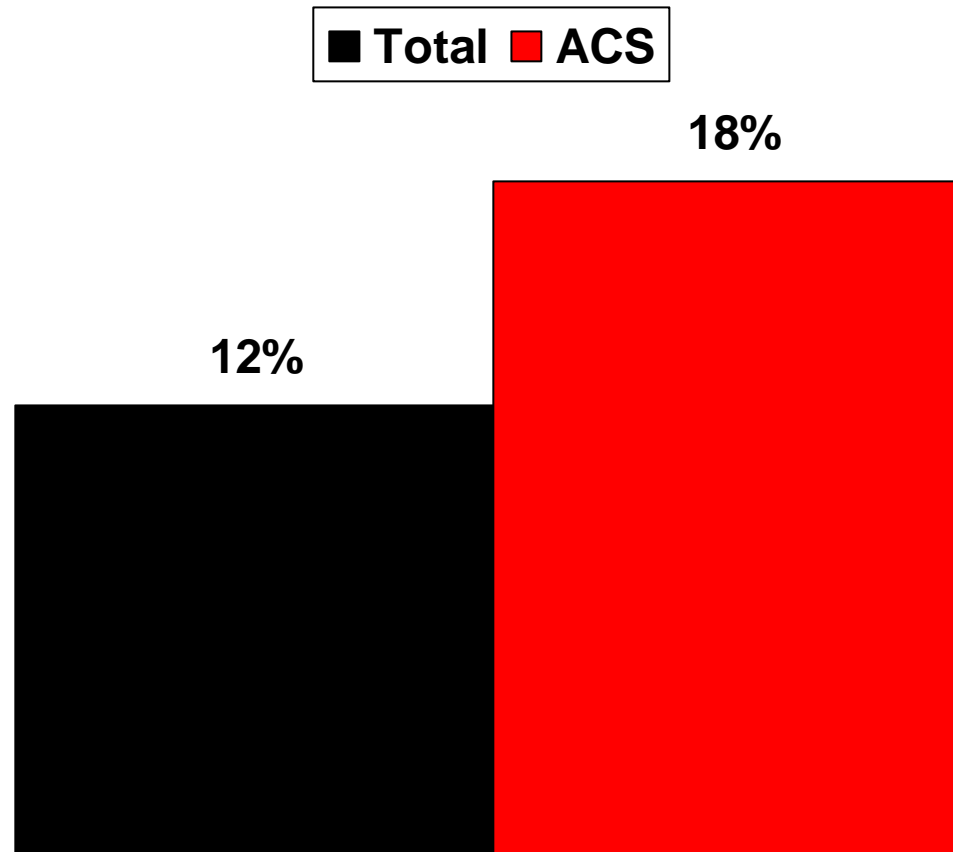
Source: NJ Hospital Uniform Billing (UB-92) Data

Charity Care Admissions for ACS Conditions



Source: NJ Charity Care Claims Data

Cumulative Percentage Change in Charity Care Admissions, 1999-2002



Source: NJ Charity Care Claims Data

Summary of findings - 1

- Large and growing amount of resources are devoted to hospital-based charity care (CC)
- Primary users of CC are
 - Non-elderly adults
 - Individuals with income < 200 FPL
- Most common diagnoses among inpatient CC users
 - Circulatory disorders
 - Mental health
 - Drug/alcohol disorders

Summary of findings - 2

- Faster growing parts of CC system are
 - Outpatient care
 - Services to uninsured elderly
 - Services to uninsured children
- CC for preventable hospitalizations growing slightly faster than CC overall
- Disparities in preventable hospitalizations between blacks & whites have recently narrowed

Appendix: Data on NJ's Uninsured

- NJ Family Health Survey
- Representative sample of individuals in NJ
- 6,466 individuals in 2,265 families
- Response rate 59.3%
- Weighted to represent population of NJ